



Formed in May 1976



Hostel Liaison Group established 1978



Research & Development Worker post created 1982

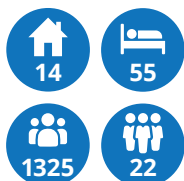


Community Resource Centre (CRC) established 1986

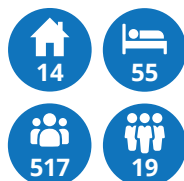
Resettlement Worker post created 1988



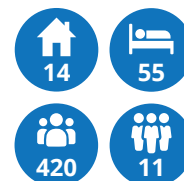
Ipswich Locality Homelessness Partnership set up 2010



SNAP contract begins 2008



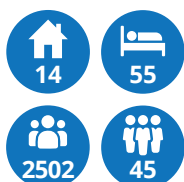
Supporting People programme commenced 2003



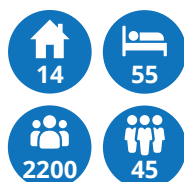
Safe House set up 2002



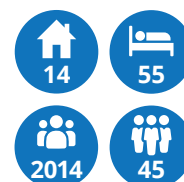
Money Advice Service established and Big Issue Selling commenced 1997



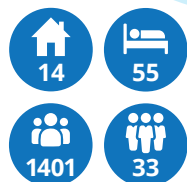
ihAg and IUT merge and CRC is renamed The Chapman Centre 2014



New Chapman Centre launched 2015



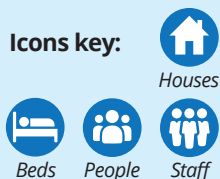
ihAg celebrates 40 years 2016



CRC moves to Black Horse Lane Suffolk Congress established 2011



Icons key:



In 2019, ihAg:

Hosted 13,000 visits at The Chapman Centre • Served 3,900 hot lunches
 Gave 24 people new accommodation • Provided 1,363 people with financial advice
 Secured £170,147 of additional income for people struggling • Offered 260 rough sleepers support